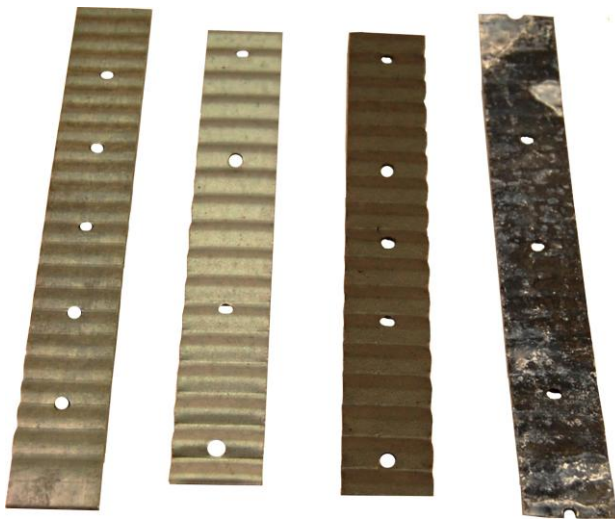




WALL/BRICK TIE

Used for brick or block
for greater strength

Corrugated



Slim Pack



Bulk Pack

AVAILABLE

Material: Galvanized, After Fab Hot Dipped,
Mill Hot Dipped

Gauges: 16, 18, 22, 26, 28

Sizes: 6", 7"

SLIM PACKS

Reduce freight costs

Save warehouse space

Are compact and convenient

Two compact cartons banded together



WALL/BRICK TIE

Corrugated for greater strength
Used for Brick or Block applications

Galvanized



Part No.	Gauge	Description	Qty per Carton	Pack Weight	Skid Qty	Price
16 Gauge						
GWT-716-250	16	7" x 7/8" Corrugated Wall Tie Bulk	250	28 lbs	60	
18 Gauge						
GWT-718-250	18	7" x 7/8" Corrugated Wall Tie Bulk	250	24 lbs	60	
22 Gauge						
GWT-722-500	22	7" x 7/8" Corrugated Wall Tie Bulk	500	20 lbs	36	
26 Gauge						
GWT-726-500	26	7" x 7/8" Corrugated Wall Tie Bulk	1000	20 lbs	36	
GWT-726-1000	26	7" x 7/8" Corrugated Wall Tie Bulk	500	40 lbs	36	
28 Gauge						
GWT-628-500	28	6" x 7/8" Corrugated Wall Tie Bulk	1000	20 lbs	36	
GWT-628-1000	28	6" x 7/8" Corrugated Wall Tie Bulk	500	18 lbs	36	
GWT-728-500	28	7" x 7/8" Corrugated Wall Tie Bulk	1000	20 lbs	36	
GWT-728-1000	28	7" x 7/8" Corrugated Wall Tie Bulk	500	22 lbs	36	

Slim Packs come with two packs banded together for easier transport
Compact and convenient



Slim Packs

Part No.	Gauge	Description	Qty per Carton	Pack Weight	Skid Qty	Price
22 Gauge						
GWTS-722-500	22	7" x 7/8" Corrugated Wall Tie Slim Packed	250	13 lbs	50	
26 Gauge						
GWTS-726-1000	26	7" x 7/8" Corrugated Wall Tie Slim Packed	500	14 lbs	50	
28 Gauge						
GWTS-728-500	28	7" x 7/8" Corrugated Wall Tie Slim Packed	250	8 lbs	100	
GWTS-728-1000	28	7" x 7/8" Corrugated Wall Tie Slim Packed	500	17 lbs	50	

ALL PRICES SUBJECT TO CHANGE WITHOUT NOTICE



WALL/BRICK TIE

Corrugated for greater strength
Used for Brick or Block applications

Hot Dipped Galvanized Mill

Part No.	Gauge	Description	Qty per Carton	Pack Weight	Skid Qty	Price
16 Gauge						
GWT-716-250-HD	16	7" x 7/8" Corrugated Wall Tie Bulk	250	28 lbs	60	
18 Gauge						
GWT-718-250-HD	18	7" x 7/8" Corrugated Wall Tie Bulk	250	24 lbs	60	
22 Gauge						
GWT-722-500-HD	22	7" x 7/8" Corrugated Wall Tie Bulk	500	20 lbs	36	
26 Gauge						
GWT-726-500-HD	26	7" x 7/8" Corrugated Wall Tie Bulk	1000	20 lbs	36	
GWT-726-1000-HD	26	7" x 7/8" Corrugated Wall Tie Bulk	500	40 lbs	36	
28 Gauge						
GWT-628-500-HD	28	6" x 7/8" Corrugated Wall Tie Bulk	1000	20 lbs	36	
GWT-628-1000-HD	28	6" x 7/8" Corrugated Wall Tie Bulk	500	18 lbs	36	
GWT-728-500-HD	28	7" x 7/8" Corrugated Wall Tie Bulk	1000	20 lbs	36	
GWT-728-1000-HD	28	7" x 7/8" Corrugated Wall Tie Bulk	500	22 lbs	36	



Hot Dipped Galvanized After Fab

Part No.	Gauge	Description	Qty per Carton	Pack Weight	Skid Qty	Price
22 Gauge						
GWTAf-722-500	22	7" x 7/8" Galvanized after Fabrication	500	33 lbs	40	

ALL PRICES SUBJECT TO CHANGE WITHOUT NOTICE